

**Maintenance**  
**Repairs**  
**Installations**  
**Inspections**



**Committed to  
Performance  
Excellence**



[www.sgbcaperopeaccess.co.za](http://www.sgbcaperopeaccess.co.za)

[www.sgbcaperopeaccess.co.za](http://www.sgbcaperopeaccess.co.za)

We are  
**WACO**

# Who We Are

## Expertise and Experience Count

SGB-Cape Rope Access is an operating division of SGB-Cape, one of South Africa's leading service providers of access scaffolding and industrial access based maintenance such as thermal insulation and corrosion protection. Operating under Waco Africa, SGB-Cape is part of Waco International, a leading equipment rental and industrial services business with operations in Africa, Australasia and the United Kingdom.



## An Affordable Alternative

Our specialist rope access services complement the Group's traditional scaffolding, mobile elevated work platforms and suspended platforms, offering an affordable alternative to access hard-to-reach locations quickly, efficiently and with minimal disruption.

We are experienced in many industry sectors including construction, power, oil and gas, banner signage, industrial maintenance and telecommunications. Regardless of the size or complexity of the job, SGB-Cape Rope Access can provide an affordable solution.

Waco Africa is a proud Level 3 BBBEE supplier with 52.14% black ownership.

## Our Growing Footprint

With our operational facilities strategically established throughout South Africa, Zambia, Mozambique, Angola, DRC, Ghana and Namibia, we have developed an infrastructure to cost effectively maintain and support operations in these locales. Our South African neighbouring countries are being serviced on a project base.





“ We offer a one stop service to our clients ”

## What We Do

### Core Services

SGB-Cape Rope Access provides customers with the ability to access hard-to-reach locations quickly, efficiently and with minimal disruption.

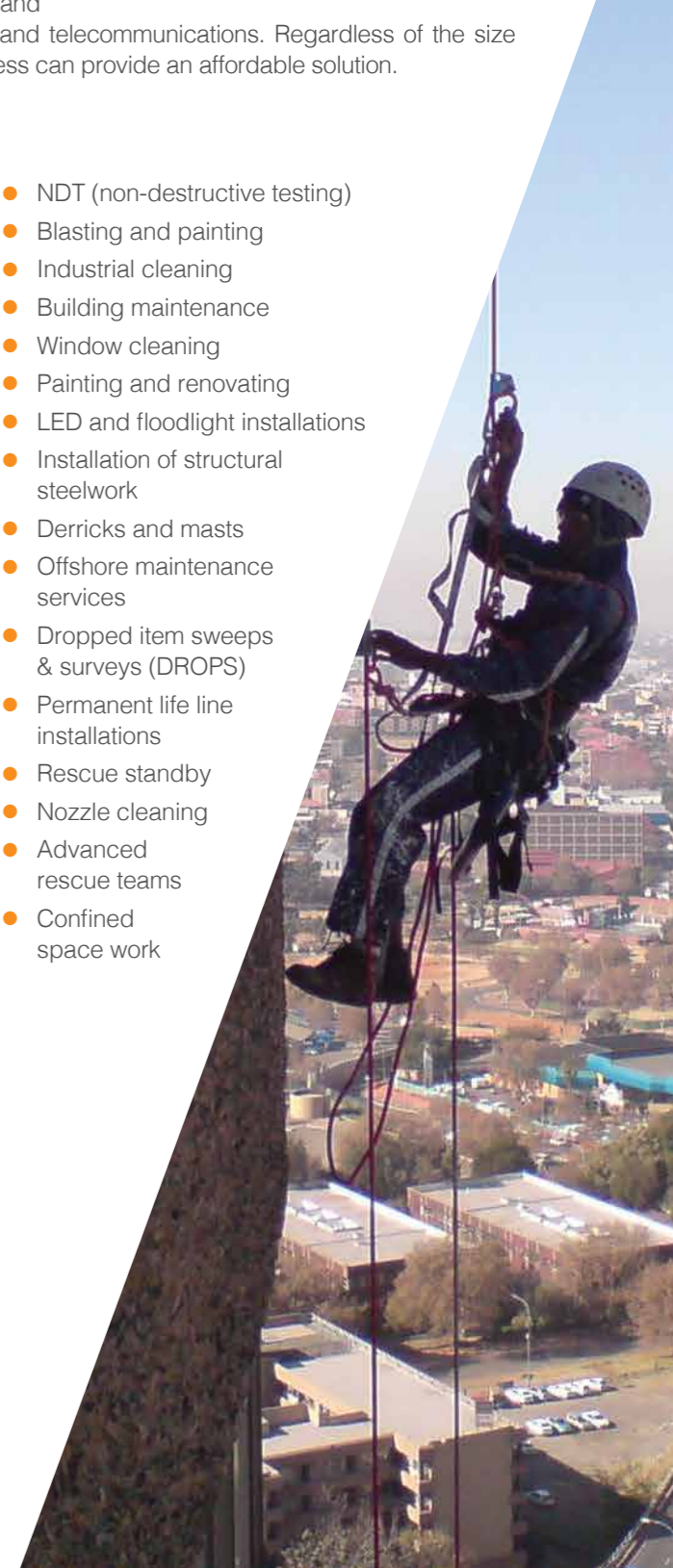
Our expert technicians are trained to the highest standard to operate safely and efficiently.

We have extensive experience in many industry sectors including construction, power, oil and gas, banner signage, industrial maintenance and telecommunications. Regardless of the size or complexity of the job, SGB-Cape Rope Access can provide an affordable solution.

Our services include:

- Insulation and cladding
- Project management and risk assessment
- Access to difficult areas
- Telecommunication
- Inspections and maintenance
- Silo and plant cleaning
- Signage
- Bird proofing
- Structural steelwork and cladding
- Semi-subs and drill ships
- Bolt torque inspections
- Lifting gear inspections
- AMS (anchor points management and installation)
- Welding and cutting
- Painting inspection
- Lifting equipment inspections
- Positive material identification (PMI)
- CUl: corrosion under insulation
- Advanced rigging and lifting
- Rigging for rescue
- NDT (non-destructive testing)
- Blasting and painting
- Industrial cleaning
- Building maintenance
- Window cleaning
- Painting and renovating
- LED and floodlight installations
- Installation of structural steelwork
- Derricks and masts
- Offshore maintenance services
- Dropped item sweeps & surveys (DROPS)
- Permanent life line installations
- Rescue standby
- Nozzle cleaning
- Advanced rescue teams
- Confined space work

- Maintenance
- Repairs
- Installations
- Inspections



# The SGB-Cape Difference

## Committed to Performance Excellence

The SGB-Cape Rope Access multi-disciplined services are structured around the customers' needs and are designed to eliminate contractor interface problems. Our trained workforce is coordinated and directed by an experienced management team.

We have an integrated approach, providing the flexibility to focus services and manpower resources on a specific area of a project in order to maintain the critical path.

SGB-Cape Rope Access employs experienced and certified rope access level 1 and 2 technicians. This ensures that the actual work being carried out on site is done under the correct supervision of well qualified and experienced Level 3 supervisors.

As one of the leading rope access companies in South Africa, SGB-Cape Rope Access has an enviable record of assisting clients to achieve their project, plant maintenance, shut down and new build objectives.

## Service Excellence

Why our clients trust us:

**Safe** – Rope access is one of the safest access solutions in the construction industry. SGB-Cape Rope Access is controlled and audited by the Institute of Working at Heights (IWH) and the International Rope Access Trade Association (IRATA). All of our access technicians are highly qualified and certified and our company's safe working procedures are well defined.

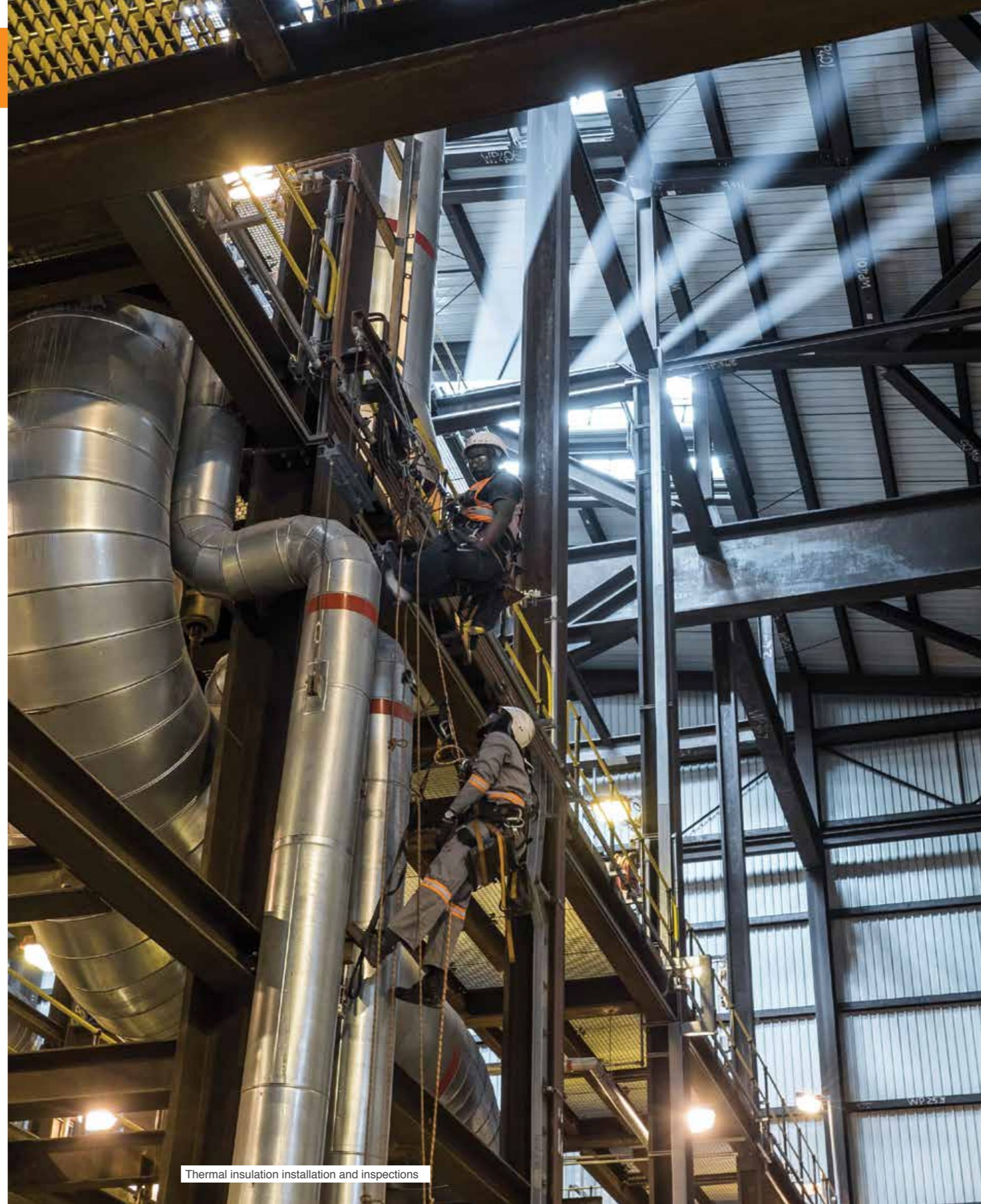
**Cost effective** - Rope access is very economical through quick setup, fewer personnel and minimal downtime resulting in faster completion.

**Versatile** - Rope access professionals can apply various skills to a wide variety of environments, from confined-space penstocks to tower structures to complicated steel installations.

**Efficient and quick** - Rope access systems are installed and dismantled quickly and require fewer personnel than traditional access methods.

**Environmentally friendly** - Rope access techniques and equipment have minimal effect on the surrounding environment compared to traditional access methods.

**Minimal disruption** - Less interference with other facility operations means less disruptions and minimised downtime.



Thermal insulation installation and inspections



“ Compliance to legislation at all times ”

NDT inspection on a Kiln, Lafarge South Africa

## Safety

### Accreditation, Membership & Quality Assurance

The SGB-Cape Rope Access quality system complies with ISO 9001:2008 requirements and is certified by DQS. Audits are conducted on an annual basis by internal as well as external auditors.

SGB-Cape Rope Access is a proud accredited member of the IWH (Institute of Work at Height), IRATA (International Rope Access Trade Association), ISO (International Organisation for Standardisation), CorriSA (Corrosion Institute of Southern Africa) and SAQI (The South African Quality Institute) affiliated with the rope access industry.



### Compliance to Legislation at All Times

Operating standards:

- International operating standards
- Utilising industry leading Rope Access software systems (RAMS)
- All equipment compliant to EN standards (European Norm)
- Accredited rope access technicians
- Valid logbook for all technicians

Servicing the following industries:

- Oil and Gas – Refineries
- Oil and Gas – Offshore vessels
- Power generation
- Construction
- Property management
- Industrial
- Mining
- Transport
- Utilities
- Wind energy



## Head Office

181 Barbara Road, Cnr Tunney Road, Elandsfontein  
Tel: +27 11 842 4000

### Louis Naude – Divisional Director (Inland Region)

Cell: 082 853 7701  
email: louisn@sgbcape.co.za

### Garth Gray – Divisional Director (Africa Operations)

Cell: 082 300 6531  
email: garthg@sgbcape.co.za

## SGB-Cape Rope Access Branch

39 Kelly Road, Unit C2, The Palisades Business Park, Jet Park  
Tel: +27 11 842 4000

### Cobus Joubert – Branch Manager

Cell: 082 741 8044  
email: cobusj@sgbcape.co.za

### Daren Wedderburn - Sales & Marketing

Cell: 076 862 3388  
email: darenw@sgbcape.co.za

### Christopher Smith - Operations Manager

Cell: 082 893 2942  
email: christophers@sgbcape.co.za

## Support Services

### Thabo Modumaela (National SHE Manager)

Cell: 082 300 6410  
email: thabom@sgbcape.co.za

### Nathan Naicker (Estimating Manager)

Cell: 082 416 8008  
email: nathann@sgbcape.co.za

### Darshan Chetty (National QA Manager)

Cell: 079 505 7877  
email: darshanc@sgbcape.co.za

### Mukesh Valab (Scaffold Design)

Cell: 079 872 5082  
email: mukeshv@sgbcape.co.za

## Power Generation

- Eskom Kriel Power Station
- Eskom Matla Power Station
- Eskom Lethabo Power Station
- Eskom Grootvlei Power Station
- Eskom Matimba Power Station
- Eskom Kendal Power Station
- Eskom Majuba Power Station
- Eskom Hendrina Power Station
- Eskom Duvha Power Station
- Eskom Arnot Power Station
- Eskom Camden Power Station
- Eskom Komati Power Station
- Eskom Kusile Power Station

## Nuclear Plant

- Eskom Koeberg Power Station

## Petro-chemical

- Sasol 1, 2 & 3
- Natref
- Engen
- Chevron
- PetroSA

## Entertainment & Media Requirements for all Stadia

- FIFA 2010 (Moses Mabhida Temporary Seating)
- Sun International (Nedbank Golf Challenge Temporary Seating and Decking)
- Department of Public Works (Inauguration of State President Temporary Seating and Decking)
- SA Tennis (SA Tennis Open and Davis Cup Temporary Seating)

## Marine & Offshore (Oil & Gas)

- DCD Dorbyl
- Dormac
- SAIPEM
- De Beers
- Pride Foramer
- Dolphin Drilling

## Mining and Minerals

- Richards Bay Minerals RBM
- Hillside
- Foskor
- Amplats
- Lafarge

## Paper & Pulp

- Sappi Usutu
- Sappi Kraft
- Sappi Ngodwana
- Sappi Enstra
- Sappi Saiccor
- Mondi Richards Bay

## Civil Building & Other

- WBHO
- Group Five
- Grinaker LTA
- Stefanutti Stocks
- Stabilid
- Murray & Roberts
- Transnet
- Dorbyl
- Dormac

**A full list of references can be provided on request.**

